

**Tubing & Pipe
Bulkhead Connections for ALL
Purging & Pressurization Systems**

BBCF

The Model BBCF Bulkhead Connection Kit provides standard nut and ferule tubing connections to a protected enclosure for a purging or pressurization system's supply and reference tubing. The Model BBCF consists of one 1/4" through wall stainless steel bulkhead fitting for atmospheric reference and one 1/4", 3/8" or 1/2" through wall stainless steel bulkhead fitting, depending on model selected, for the supply connection to the protected enclosure.

BFCF

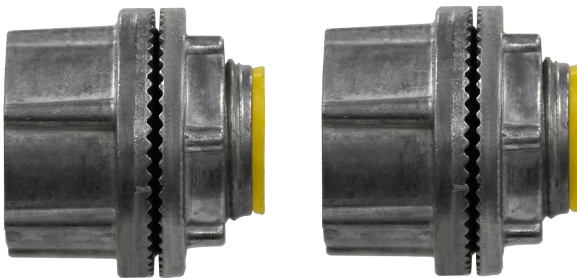
The Model BFCF Bulkhead Connection Kit provides standard nut and ferule tubing connections to a protected enclosure for a purging or pressurization system's supply and reference tubing. The Model BFCF consists of one 1/4" flush mount stainless steel bulkhead fitting for atmospheric reference and one 1/4", 3/8" or 1/2" through wall stainless steel bulkhead fitting, depending on model selected, for the supply connection to the protected enclosure.

FFCF

The Model FFCF Bulkhead Connection Kit provides standard nut and ferule tubing connections to a protected enclosure for a purging or pressurization system's supply and reference tubing. The Model FFCF consists of one 1/4" flush mount stainless steel bulkhead fitting for atmospheric reference and one 1/4", 3/8" or 1/2" flush mount stainless steel bulkhead fitting, depending on model selected, for the supply connection to the protected enclosure.

EPC

The Model EPC Enclosure Pipe Connection Kit provides an NPT connection to a protected enclosure for piping between multiple purged or pressurized enclosures. The Model EPC consists of two 3/4", 1 1/4" or 1 1/2" flush mount zinc die cast bulkhead fittings.



**Model EPC
Enclosure Pipe Connection Kit**

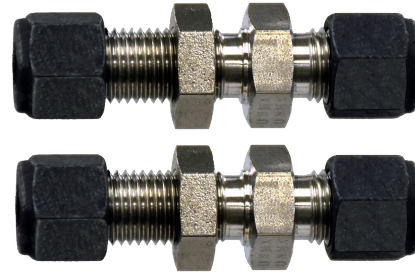


**Model BBCF, BFCF,
BFFK & EPC**

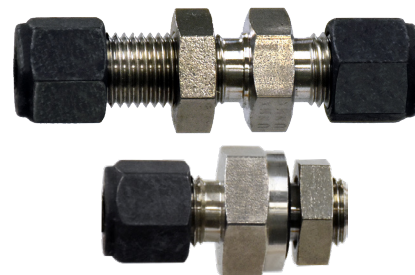
Tubing & Pipe Bulkhead Connection Kits

Technical Bulletin BCK TB-R0

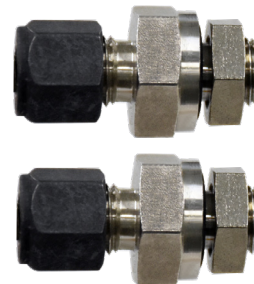
© 06.20.2018



**Model BBCF
Through Wall Supply & Reference
Bulkhead Connection Kit**



**Model BFCF
Through Wall Supply & Flush Reference
Bulkhead Connection Kit**



**Model FFCF
Flush Mount Supply & Reference
Bulkhead Connection Kit**



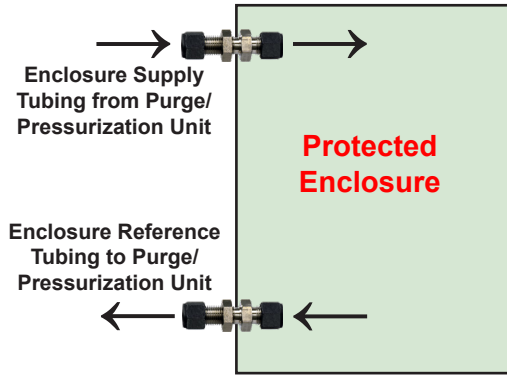
Best Purging Systems
Enclosure Purging & Pressurization Solutions

4725 Lawndale • La Marque, Texas 77568

Phone: 409.316.4920 • Fax: 409.935.5819
www.purgeit.com • 1.844 PURGE IT

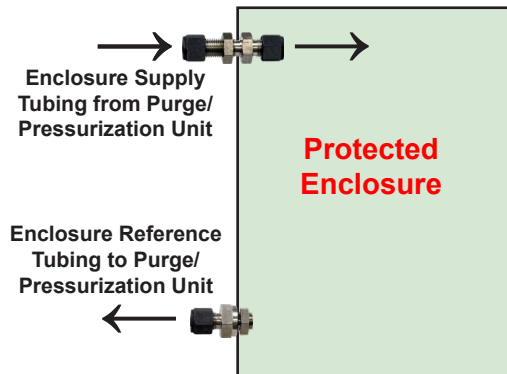
Typical Enclosure Connections

Model BBCF



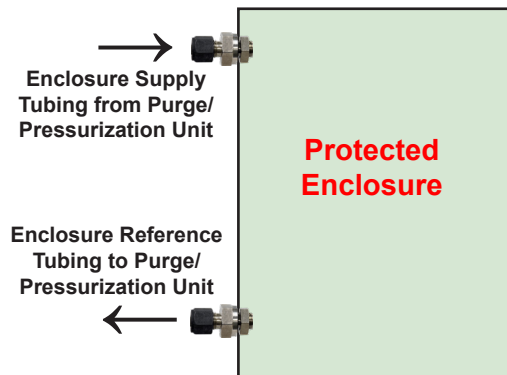
Allows continuation of Supply & Reference Tubing within Protected Enclosure to preferred locations of supply and reference

Model BFCF



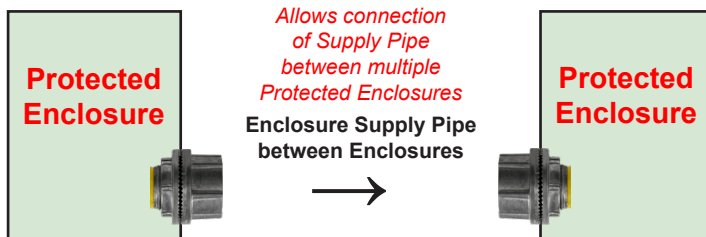
Allows continuation of Supply Tubing within Protected Enclosure to a preferred location for supply

Model FFCF



Terminates Supply & Reference Tubing at Protected Enclosure Bulkhead

Model EPC



Allows connection of Supply Pipe between multiple Protected Enclosures

Model EPC is intended for use between any quantity of multiple enclosures with any connection fitting kit above that will provide supply tubing from a Purge or Pressurization Unit to the first enclosure in the series and the reference tubing from the last enclosure in the series

Model Number Matrix

Model # **BBCF - A2**

Connection Kit Model _____

BBCF- Through Wall Bulkhead Connection Kit

BFCF- Through Wall & Flush Bulkhead Connection Kit

FFCF- Flush Bulkhead Connection Kit

EPC- Enclosure Pipe Connection Kit

Compatible Systems _____

A2- All YZ101A & YZ102 Configurations

B3- All YZ101B & YZ103 Configurations

C4- All YZ101C & YZ104 Configurations

Connection Kits Fitting Sizes Chart

	A2	B3	C4
BBCF - One (1) each			
Supply	1/4"	3/8"	1/2"
Reference	1/4"	1/4"	1/4"
BFCF - One (1) each			
Supply	1/4"	3/8"	1/2"
Reference	1/4"	1/4"	1/4"
FFCF - One (1) each			
Supply	1/4"	3/8"	1/2"
Reference	1/4"	1/4"	1/4"
EPC - Two (2)			
Pipe Connection	3/4"	1-1/4"	1-1/2"

Material Specifications

Models: BBCF, BFCF & FFCF

Body & Ferrules: 316 Grade Stainless Steel

Nuts: Molybdenum disulfide coated 316 Stainless Steel

Model: EPC

Hub & Locknut: Zinc Die Cast

Insulating Throat: Thermoplastic

Sealing Ring: BUNA "N" Nitrile

Specifications subject to change without notice, warranty & liability statements available upon request.