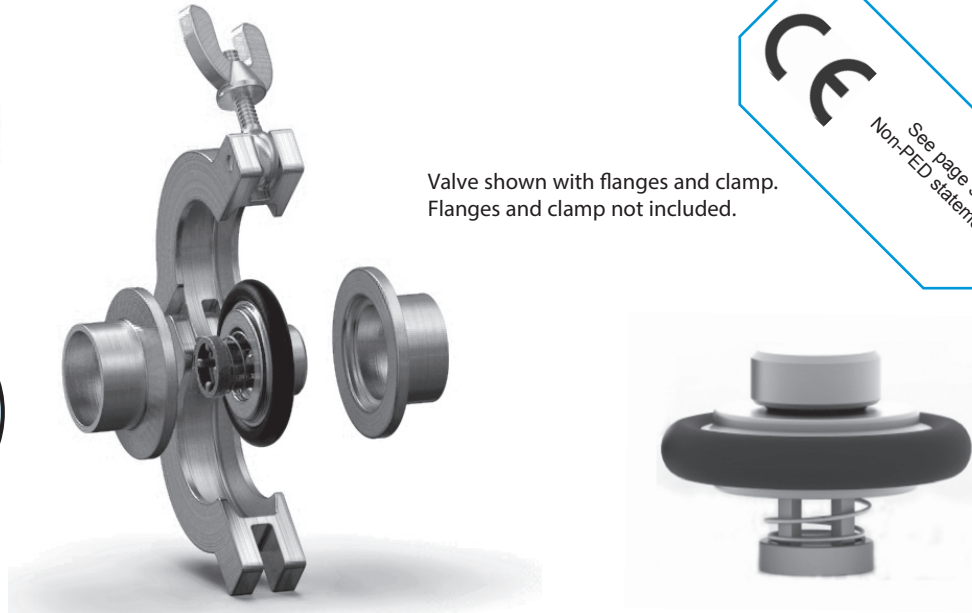
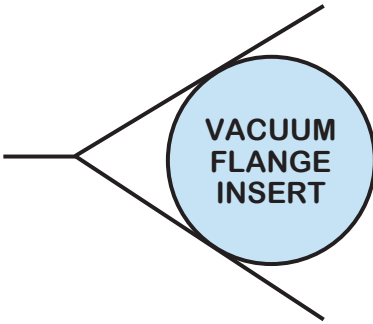


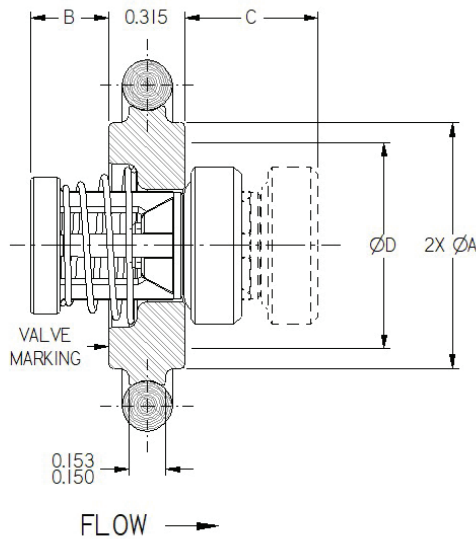
Valve shown with flanges and clamp.
Flanges and clamp not included.



The **Vacuum Flange Insert (VI)** valve is designed to fit between ISO/NW/KF/QF vacuum flanges designed in accordance with DIN 28403, DIN 28404, ISO 1609, and ISO 2861. It is both a centering ring and a check valve. The compact design requires no additional space in the line. Its size makes it extremely economical when compared to full-bodied valves.

The VI valve can also be used as a low pressure relief valve under either positive or vacuum conditions by using the desired spring setting.

NOTE: USP Class VI o-rings can be supplied with certification.



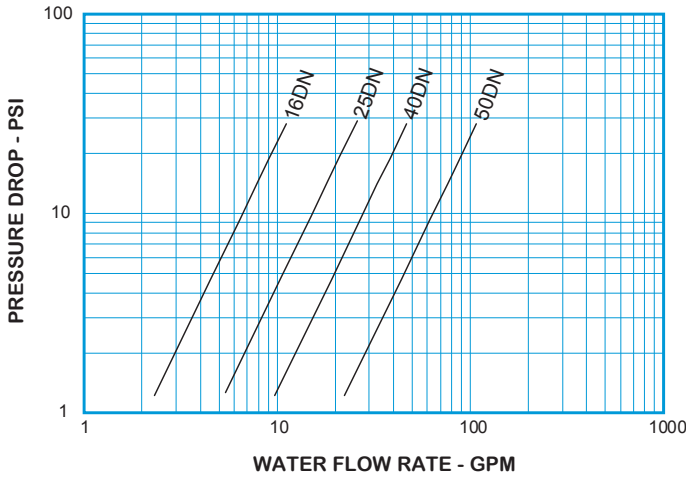
DN	Size Code	DIM A	DIM B	DIM C ^①	DIM D ^②	ORIFICE DIAMETER
16	F	0.665-0.669	0.31	0.52	0.62	0.348
25	H	1.020-1.023	0.35	0.57	0.87	0.464
40	J	1.611-1.614	0.67	0.82	1.37	0.890
50	K	2.044-2.047	0.87	1.00	1.87	1.135

- ① Maximum nominal dimension for fully open valve with no spring.
- ② Minimum recommended flange ID

DN	SIZE CODE	STYLE NUMBERS 316 SS ^③	NON-SHOCK PRESSURE-TEMPERATURE RATING	OUTSIDE O-RING SIZE
16	F	VIFSS	FULL VACUUM-ATMOSPHERIC @ 100°F	314
25	H	VIHSS		320
40	J	VIJSS		326
50	K	VIKSS		330

③ See page 56 for material grade information.

Vacuum Flange Insert Valve
For Water at 72°F



Note: All flow curves and Cv values presume the valves are fully open with 1/2 PSI cracking pressure springs. Consult the factory for more information.

STYLE VI C _v VALUES & VALVE WEIGHTS		
C _v	SIZE	316 SS
2.4	16	0.7 oz.
4.6	25	1.6 oz.
9.5	40	4.1 oz.
20.9	50	7.0 oz.

See page 51 for Flow Formulae.
Valve weights are approximate.

**HOW TO ORDER
CHECK-ALL STYLE VI**

BODY MATERIAL
316/316L SS = SS
See p. 3 for temperature rating

SPRING CRACKING PRESSURES (PSI)
Must use decimal as a character unless selecting NO SPRING. Specify Exact Setting

SPRING RANGES	EXAMPLE
.000 TO .999	= .500
1.00 TO 9.99	= 1.50
10.0 TO 85.0	= 15.0
NO SPRING	= NOSPRG

STANDARD CRACKING PRESSURES ①
.125 .500 1.50 3.50
(Sizes D-J Only)

Note: Many other cracking pressures are available. All spring tolerances +/- 15%.

VALVE STYLE

VI SS

SIZE

16 = F
25 = H
40 = J
50 = K

SEAT & OUTER SEAL MATERIAL

AFLAS® = AS USP CLASS VI AFLAS® = UA
 BUNA-N = BN USP CLASS VI EPDM = UE
 EPDM = EP USP CLASS VI SILICONE = US
 KALREZ® = KZ USP CLASS VI VITON™ = UV
 NEOPRENE = NE
 VITON™ = VT

See p. 3 for temperature ratings

SPECIAL OPTIONS

T = FEP ENCAPSULATED SPRING
 See pages 3 & 4 for temperature rating
 Contact the factory for more options

SPRING MATERIAL

316 SS = SS
 ALLOY C-276 = HC
 ALLOY B = HB
 INCONEL® X750 OR ALLOY X750 = IX
 MONEL® 400 = MO
 17-7PH SS = PH
 TITANIUM = TI

See p. 4 for temperature ratings

Listed above are the most common material selections. Please contact the factory for additional options.

① .500 PSI is the only standard cracking pressure for spring materials other than Stainless Steel. .125 PSI springs are not recommended for installations with flow vertical down.