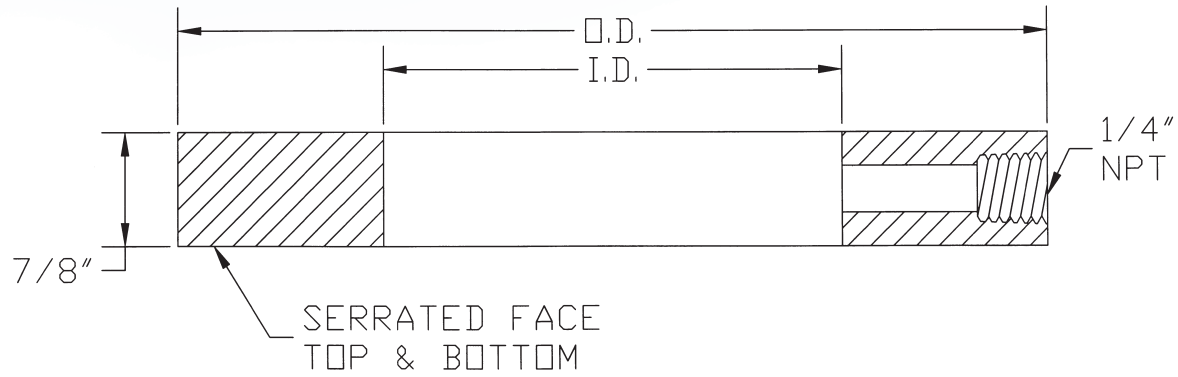


# Purge Ring

## Engineering Information:



Flange Size	O.D.	I.D.
2-150	4	2
2-300	4 1/4	2
3-150	5 1/4	3
3-300	5 3/4	3
4-150	6 3/4	4
4-300	7	4
6-150	8 5/8	6
6-300	8 1/2	6
8-150	10 7/8	8
8-300	12	8

- The outside diameter of the purge ring is machined to fit inside of the flange bolts of two 150 or 300 psi flanges, thereby centering the purge ring and is sealed with gaskets.
- Higher-pressure purge rings will be machined with the outside diameter matching the raised face of the flanges.