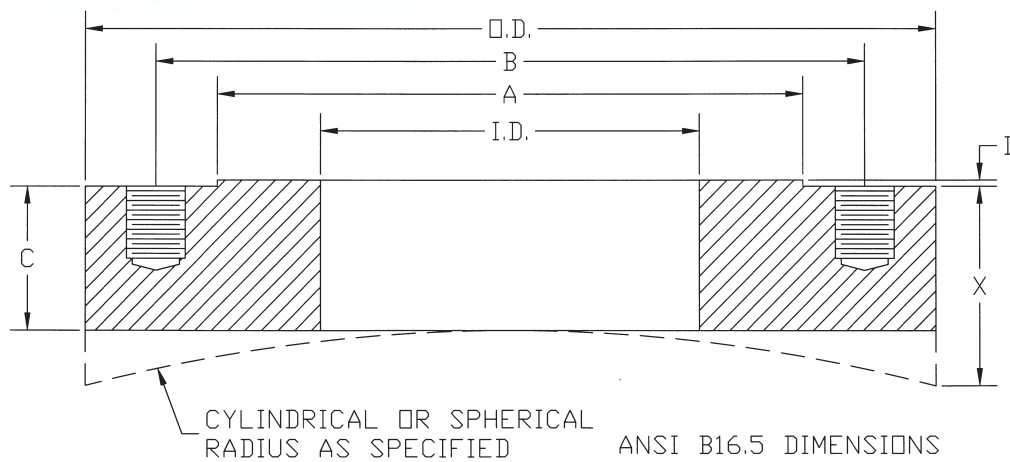


Weld Pad

Engineering Information:



Size inch-psi	I.D.	O.D.	A	B Bolt Circle	Drill & Tap	C	D
2-150	2	6	3 5/8	4 3/4	5/8 - 11	1 1/4	1/16
2-300	2	6 1/2	3 5/8	5	5/8 - 11	1 1/4	1/16
2-600	2	6 1/2	3 5/8	5	5/8 - 11	1 1/4	1/4
3-150	3	7 1/2	5	6	5/8 - 11	1 1/4	1/16
3-300	3	8 1/4	5	6 5/8	3/4 - 10	1 1/4	1/16
3-600	3	8 1/4	5	6 5/8	3/4 - 10	1 1/4	1/4
4-150	4	9	6 3/16	7 1/2	5/8 - 11	1 1/4	1/16
4-300	4	10	6 3/16	7 7/8	3/4 - 10	1 1/2	1/16
4-600	4	10 3/4	6 3/16	8 1/2	7/8 - 9	1 1/2	1/4
6-150	6	11	8 1/2	9 1/2	3/4 - 10	1 1/2	1/16
6-300	6	12 1/2	8 1/2	10 5/8	3/4 - 10	2	1/16
6-600	6	14	8 1/2	11 1/2	1 - 8	2	1/4
8-150	8	13 1/2	10 5/8	11 3/4	3/4 - 10	2	1/16
8-300	8	15	10 5/8	13	7/8 - 9	2 1/2	1/16

- The Weld Pad can be supplied with a radius (cylindrical or spherical) to match vessel or head.
- Weld Pad dimensions may have to be increased to meet ASME requirements. It is the vessel designer's responsibility to determine reinforcement, corrosion allowance, etc. for the particular application.
- Sizes for DIN standards or non-ANSI flanges are available upon request.