

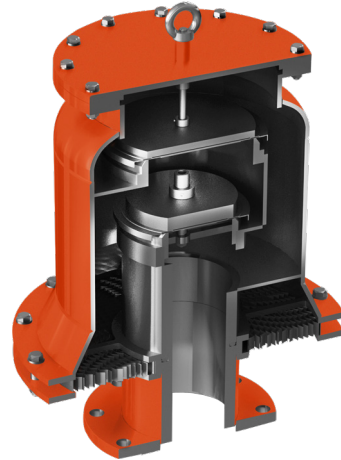
# FAB Valve® Series

## End-of-Line Deflagration Flame Arresters



### Deflagration Flame Arrester for NEC Explosion Gas Group C & D with integral Pressure and Vacuum Conservation Vent

The Protectoseal FAB Valve® Series integrates a RE-Flow® Deflagration Flame Arrester with a Pressure and Vacuum Conservation Vent.



### Principle of Operation

The FAB Valve® Series serves as both a Pressure and Vacuum Conservation Vent and a Deflagration Flame Arrester.

**Pressure Conservation Vent:** prevents vapor loss up to the set pressure and provides dependable protection against excessive pressure.

**Vacuum Conservation Vent:** prevents air ingress up to the set vacuum pressure and provides reliable protection against excessive vacuums.

**Flame Arrester:** provides additional protection against atmospheric deflagrations.

### Operating Conditions

The Protectoseal FAB Valve® Series is ATEX-approved for a maximum operating temperature of **140°F** or **60°C**. For high-temperature models, the maximum operating temperature is increased to **302°F** or **150°C**.

### Explosion Gas Groups

The Protectoseal FAB Valve® Series is certified for gases in **NEC Groups C and D** and **IEC Groups IIA1, IIA, IIB1, IIB2 and IIB3**.

### Standards Compliance

Protectoseal's FAB Valve® has been type-tested to **EN ISO 16852** and approved according to **ATEX Directive 2014/34/EU**.

Each FAB Valve® that passes through Protectoseal's facilities undergoes a rigorous inspection and verification of its safety and performance features.

### Protectoseal Expertise

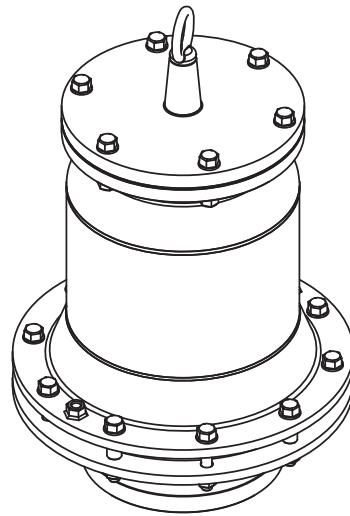
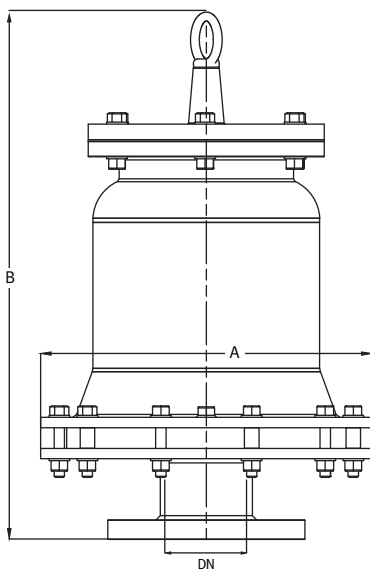
Protectoseal offers industry leading technical leadership with its renowned flame and explosion protection for the most diverse and challenging of industrial applications. By utilizing a range of testing facilities, advanced algorithms and computational fluid dynamics (CFD), our research and development team is constantly looking for new ways to challenge the status quo, thus providing best-in-class innovation.

With over 95 years in the business, we have an established sales and service team to support clients with their initial specifications and throughout the product's life cycle.

## Features and Benefits

- Outstanding flow capacity with minimal pressure drop
- Compact, light, and simple to install
- Elements feature replaceable, easy-to-clean crimped-ribbon
- Financial savings due to reduced product loss
- Low-leakage
- Easy in-situ inspection and maintenance
- Self-draining element prevents fouling and clogging
- Optimized pallet design and sealing to reduce chattering
- Innovative valve design offers complete weather protection
- Meets API Std 2000 and ISO 28300 regulations

## General Arrangements:



## Specifications:

**Pressure:**

0.05 psi to 0.51 psi  
3.5 mbarg to 35 mbarg

**Vacuum:**

-0.03 psi to -0.29 psi  
-2.0 mbarg to -20 mbarg

**Sealing:** FEP, PTFE

**Weight:** Lead, Stainless Steel

**Connection Size:** 2" to 12"

## Selection Key

Positions	1	2	3	4	5	6	7	8	9
Example	F	A	B	-	0	5	0	A	S
Table	a	b	c	-	d			e	f
Model No.	F	A	B	-				A	

Options		
a	Flame Arrester Type	Flame Arrester Breather
b	Model Variation	-
c	Gas Group	C, D, IIA1, IIA, IIB1, IIB2, IIB3
d	Size	Refer to Table 1
e	Pipe Connection Type	ANSI 150lb. RF
f	Flame Arrester Housing Material	Refer to Table 2

Table 1: Sizes

d	Size	A	B	f
050	2", 50mm	12.60", 320mm	17.91", 455mm	D or T
080	3", 80mm	12.60", 320mm	17.91", 455mm	D or T
100	4", 100mm	15.94", 405mm	22.05", 560mm	C or S
150	6", 150mm	17.80", 452mm	29.72", 755mm	C or S
200	8", 200mm	21.85", 555mm	34.45", 875mm	C or S
250	10", 200mm	24.02", 610mm	36.42", 925mm	C or S
300	12", 300mm	25.39", 645mm	37.80", 960mm	C or S

Table 2: Flame Arrester Housing Materials

f	Flame Arrester Housing (Body) Material
C	Fabricated Carbon Steel
D	Cast Carbon Steel
S	Fabricated 316/316L Stainless Steel
T	Cast 316 Stainless Steel

### Customer Support

Tel: 1.630.595.0800  
 Email: info@protectoseal.com  
 Fax: 1.630.595.8059  
 225 Foster Avenue Bensenville, IL 60106 U.S.A

